

VANGARD 2250 TRIPLEX

Manufactured with premium materials and new fluid-end technologies for extended service life in the harshest environments



VALVE OVER VALVE DESIGN
HARD COATED PLUNGERS
SUPERGOLD HEADER RING STYLE PACKING
3" 1502 DISCHARGE FLANGES
CENTER 2" 1502 GAUGE CONNECTION
PLENUM STYLE SUCTION MANIFOLD W/ 6" CONNECTIONS
FITS ON ALL 2250 HPTRIPLEX PUMPS
POWER-ENDS WITH 8" STROKES
INTERCHANGABLE INTERNAL COMPONENTS

US PATENTS:

6,382,940 / 6,544,012 / 6,623,259 / 6,910,871 /
7,168,144 / 7,186,097



VANGARD
TECHNOLOGIES

FEATURES & BENEFITS

Forgings made from
ANSI 4330VM tool steel
with maximum additives
(Ni, Cr, Mo, V)

Heat treating (quench and
tempered) at near net
shape for increased
toughness and fatigue
resistance

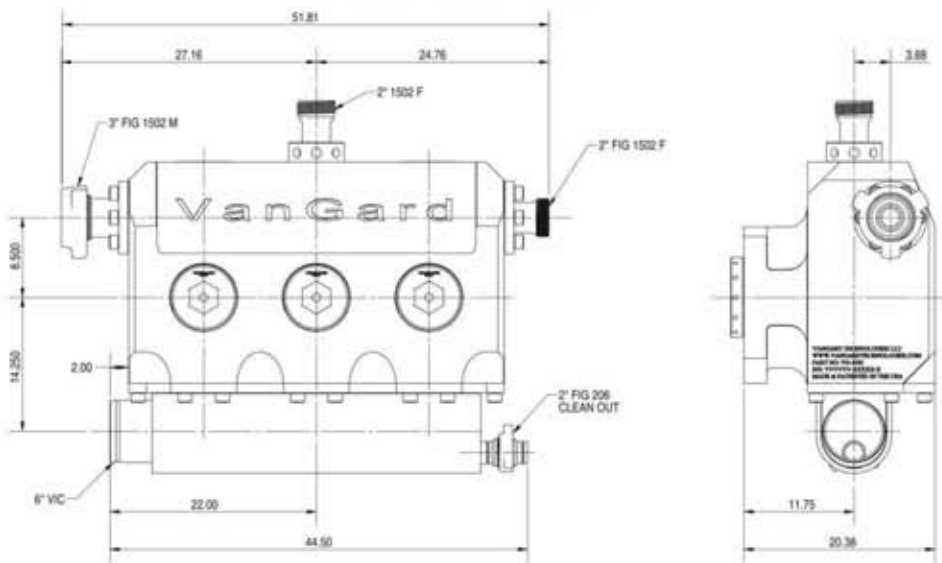
Shot Peened and QPQ
treated for increased
surface hardness,
lubricity, and corrosion
resistance

Interchangeable
components for all
cylinder types

REVOLUTIONARY OBLONG BORES

One of the key features of Vanguard Fluid-Ends are its patented OBLONG BORES. Extensive FEA analysis and field test has shown oblong bores results in a 40% stress reduction compared to a traditional intersecting bore design. The lower stress results in double the fluid-end life compared to conventional fluid-ends.

DIMENSIONS



VANGARD
TECHNOLOGIES, LLC.

P.O. Box 82209
Lafayette, LA 70598
www.vanguardtechnologies.com
sales@vanguardtechnologies.com
337-296-7410